



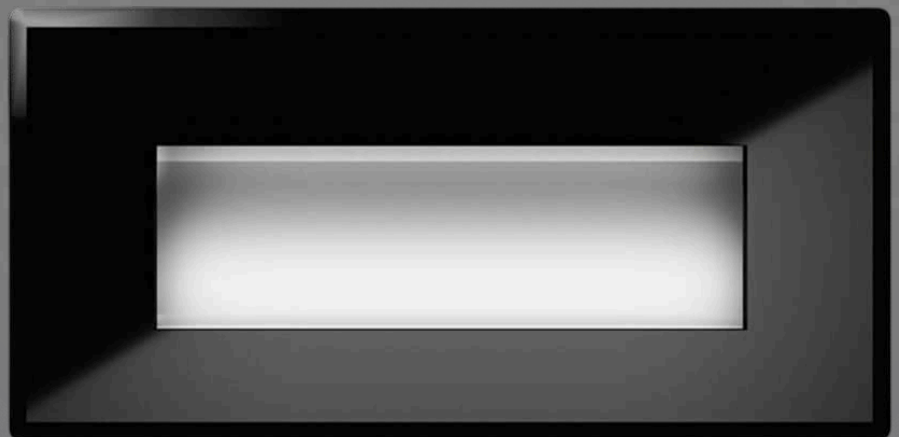
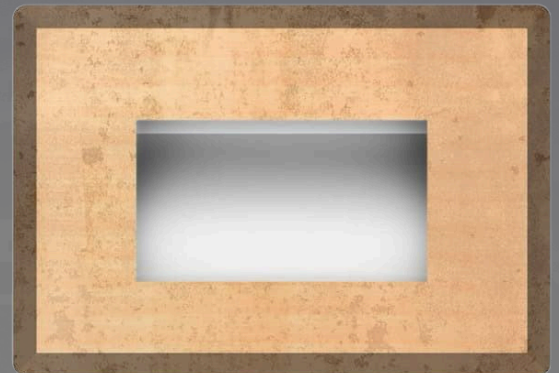
**BULLARD  
BOLLARDS**  
Think Bollard Think Bullard

## INSTALLATION INSTRUCTION

# BUNNY PASS

50/50L & 40/40L

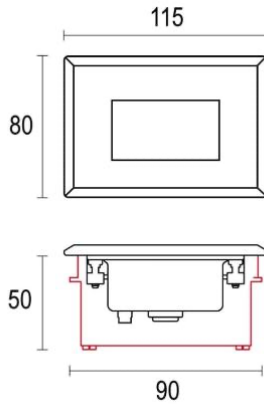
INSTALLATION TYPE:  
WALL SURFACE



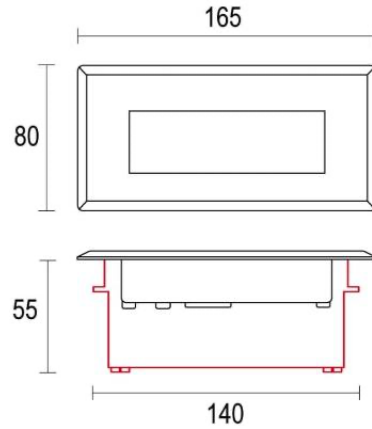
03/09/2026



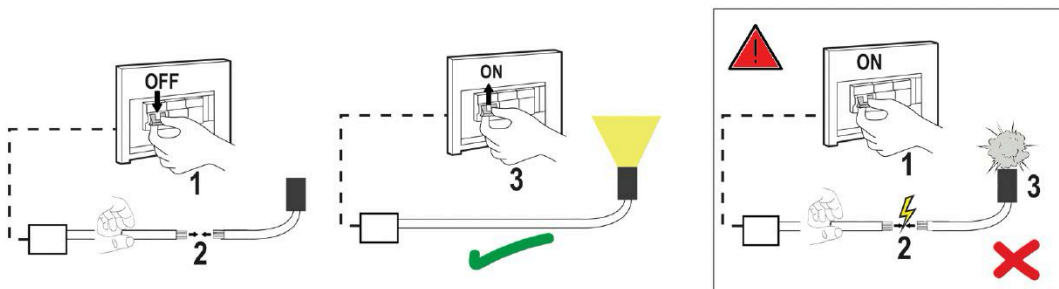
**BUNNY PASS 50**

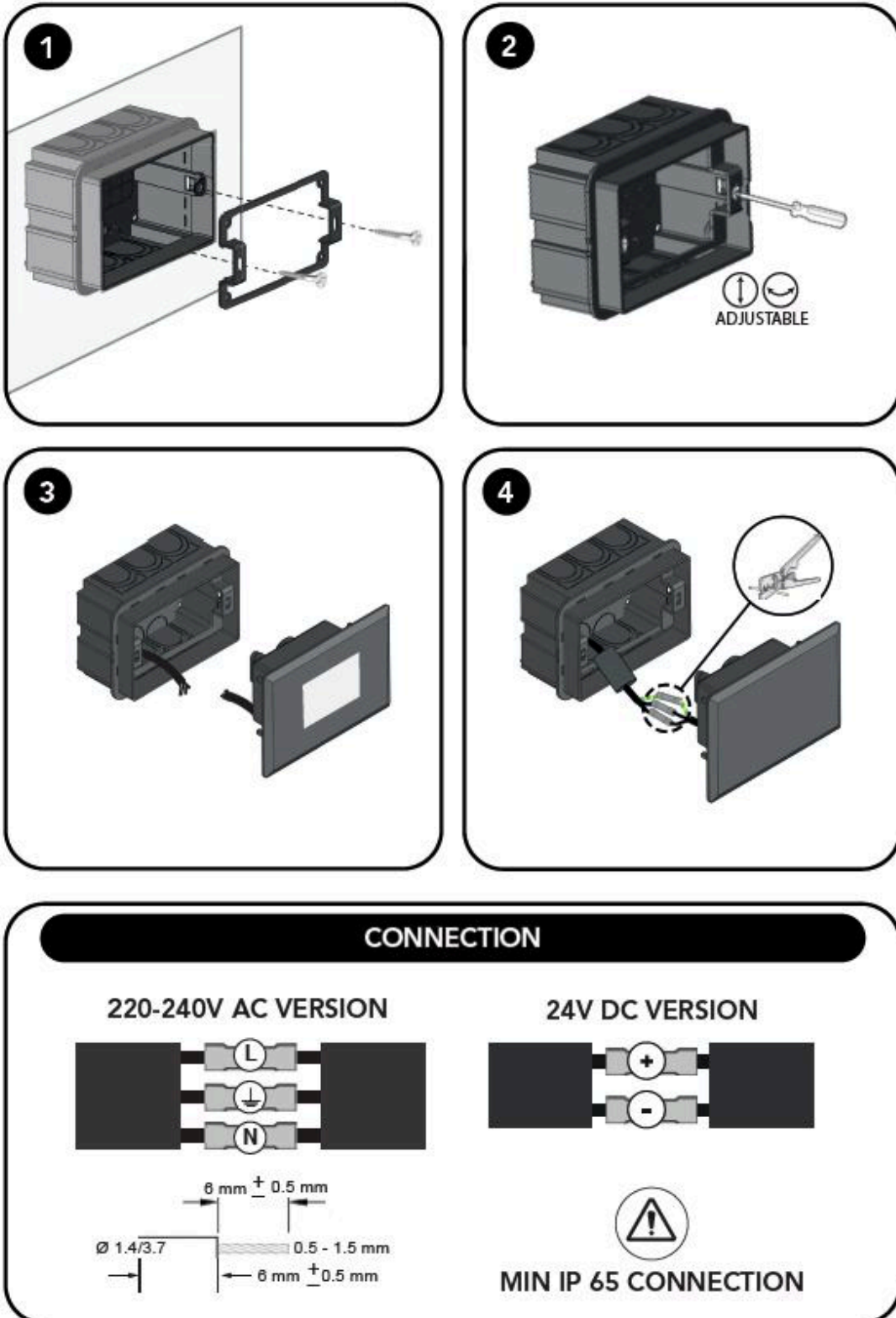


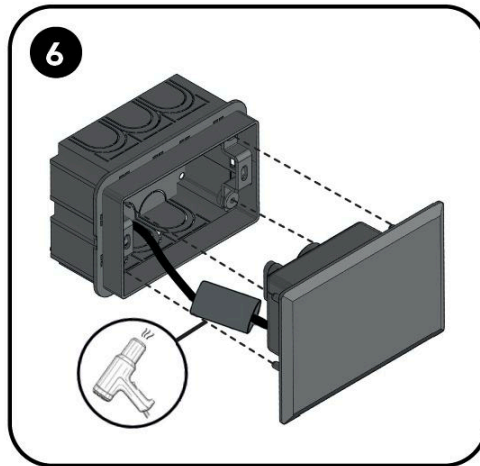
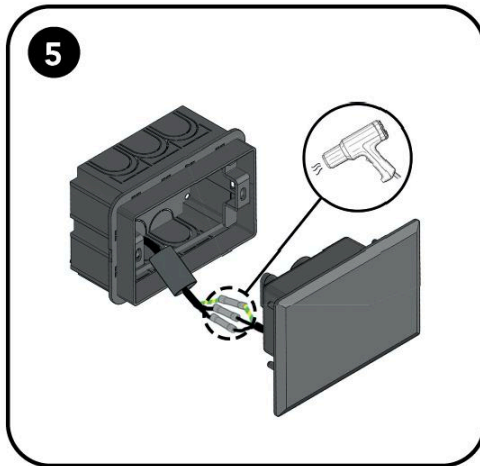
**BUNNY PASS 50L**



**Switch-off the power supply**

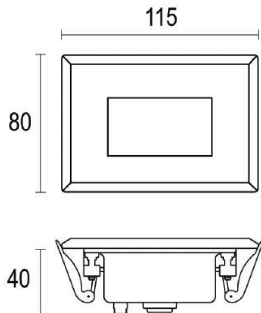




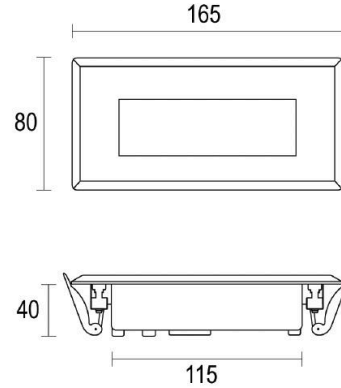




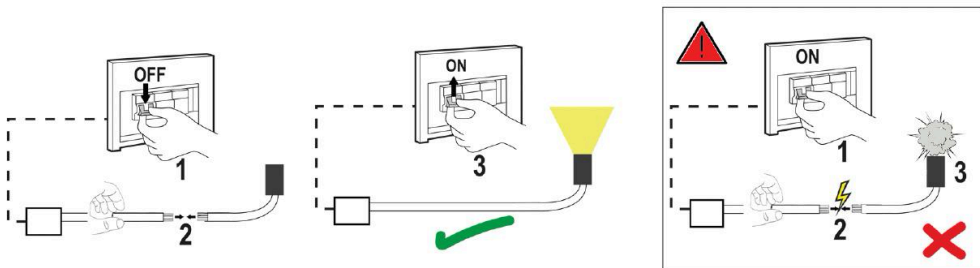
**BUNNY PASS 40**



**BUNNY PASS 40L**



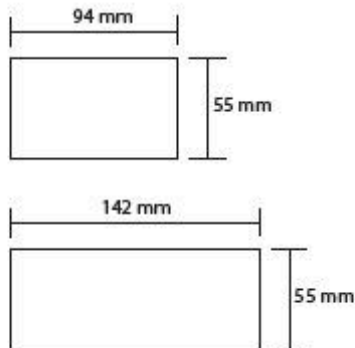
**Switch-off the power supply**



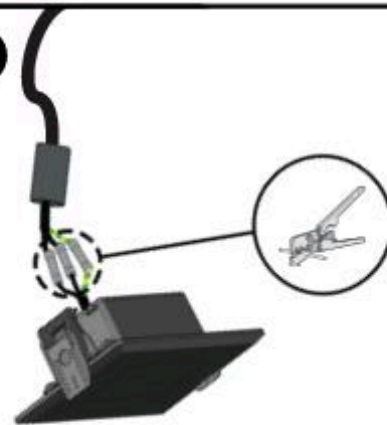


### DRYWALL VERSION

#### INSTALLATION HOLE

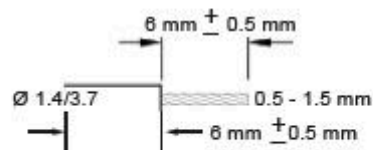
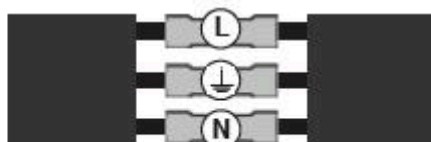


1

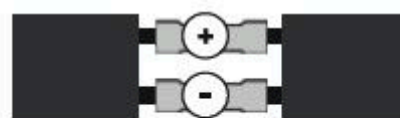


### CONNECTION

#### 220-240V AC VERSION



#### 24V DC VERSION



MIN IP 65 CONNECTION

2



3



P.6

[sales@gordonbullard.com](mailto:sales@gordonbullard.com)  
[www.bullardbollards.com](http://www.bullardbollards.com)  
1 877-964-4646



991 South Gull Lake Dr.  
Richland, MI 49083  
USA

